

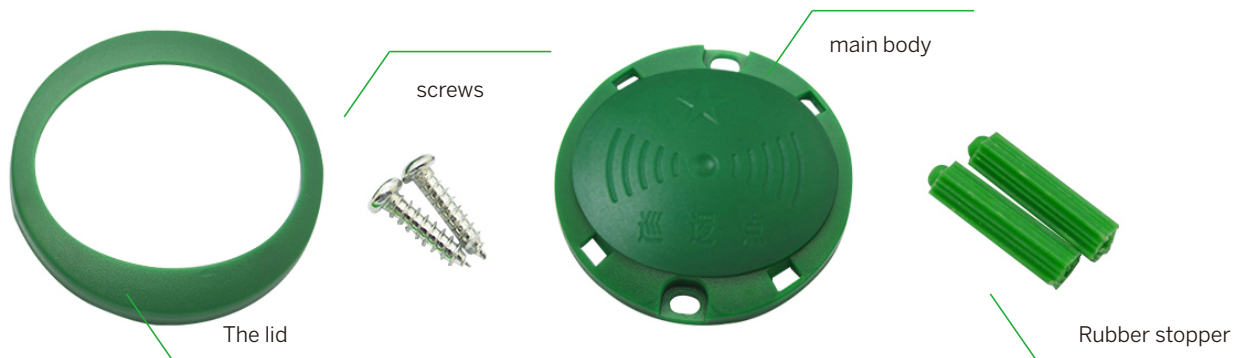
RFID Checkpoint For Guard Tour System



GTP-01A

Feature

- > Passive tag, installed at where patrol needed, work as a label to mark check location
- > 125kHz, 13.56MHZ ISO15693 and ISO14443A optional
- > Size: 60mm
- > Weight: 30g
- > Color: Green, Silver grey and White luminous(recommended, can be seen at dark)
- > Battery: No, passive tags
- > Compatibility: 125kHz tags are for all our models. 13.56MHZ ISO15693 and ISO14443A are for customized model GTP-6500



Step 1: Drill 6mm holes in the wall and screw in the rubber plugs

Step 2: Fix the main body of the patrol point with 2 or more screws

Step 3: Cover the top cover

